



WASHI INFORMS LIFE



Architectural  
Parchment

Hiro Odaira

Precious Pieces



WASHI INFORMS LIFE - Experience Washi, Architectural Parchment  
Washi for Interiors (Tapestry, Lighting Wall hanging etc...)

After the shocking events of 9.11, I strongly sensed that people were seeking something that would bring peacefulness to their lives, and so I came up with the idea of incorporating Washi paper into design as a means of creating a visually calming place in which to live.

The Japanese have used paper for hundreds of years for many purposes. Paper was originally created as a record keeping media on the continent and then brought across the ocean to Japan. Once it reached Japan, the Japanese quickly realized paper's full potential and reimagined it as a building material. For over 500 years, paper has been put to use in interiors and exteriors for doors, partitions, room dividers, lampshades, wall coverings, scrolls, as well as fans, umbrellas, and clothing. Japanese houses were literally made with wood and paper.

My washi art for doors and Japanese traditional fusuma doors have a number of similarities. They use continuous patterns throughout the doors and create a mural. In addition, closet doors can transform ordinary storage space into a private gallery. Living with washi is embodying art and craft. It affects your mind and life style. Illuminated washi gives you the same dramatic feeling as paper lamp shades.

People in New York have gradually come to understand and appreciate the beauty and value of interiors infused with Washi. I believe that the right living environment can imbue your mind with a soothing sense of well-being and that, through the medium of Washi, I can create serene spaces that heal your life.

Hiro Odaira  
May 2013

ニューヨークと和紙  
建築空間に於ける和紙の造形

同時多発テロの大惨事の後には、多くの人が自分や将来を見失い、何かすが  
るものや普遍的に信じられるものを求めていたような気がした。私のテーマは「  
人のところに寄り添う」事であり「癒し」だった。もう一度原点に立ち返り、人々  
と和紙の関わり合いを求める都会の人々のために、和紙を復活させる役に立  
てればと思った。また障子、襖のない西洋の生活において、和紙で出来た物を  
空間にもつことで生活に癒しと、気持ちをやわらげる効果が得られると考えた。

日本人は1000年以上ものあいだ紙にかこまれた生活をしてきた。そのはじまり  
は大陸から渡って来たものであるが、その後日本に根づき、文字や言葉を残す  
ために生まれた紙が、空間造形の一部として使われる様になっていた。その後  
500年以上の長い間、紙は日本では建築素材として大きく発展し、記録として  
文字を書くものよりも多量に作られ、使われた。建築空間の中の「紙」は、「障子  
」だけでなく、襖(ふすま)、照明(ランプ)、屏風(びょうぶ)、壁、掛け軸をはじめ、  
和傘や団扇、扇子などとして、生活に深く根ざすようになる。まさしく日本の家は  
木と紙でできていた。

私のWashi Artは日本の「ふすま」と同じく2枚4枚などの続き絵になっている。  
その概念は日本の「ふすま」で、模様などを続き柄で、室内に巨大なキャンバス  
が出現させることである。また日本の「ふすま」は平凡なドアや収納が必要に  
応じて変化するギャラリーとなり得るが、そのアート性をWashi Artは受け継い  
でいる。人の心に近い身近なクラフトであり芸術であり、また障子の様に、和紙  
に光を通したときに得られる、情緒的な部分も和紙の魅力として、光を中にい  
れて楽しめる内照式とした。

同時多発テロ以降かなりゆっくりとではあるが、NYの社会に役に立てるもの  
が出来てきたような感触をもっている。私にとっての和紙は、「何か貢献できる  
もの」今後も平坦ではないとは思いますが、和紙に接してくれる人々のために、大切に  
制作していきたいと思う。

小平伸浩

小平伸浩





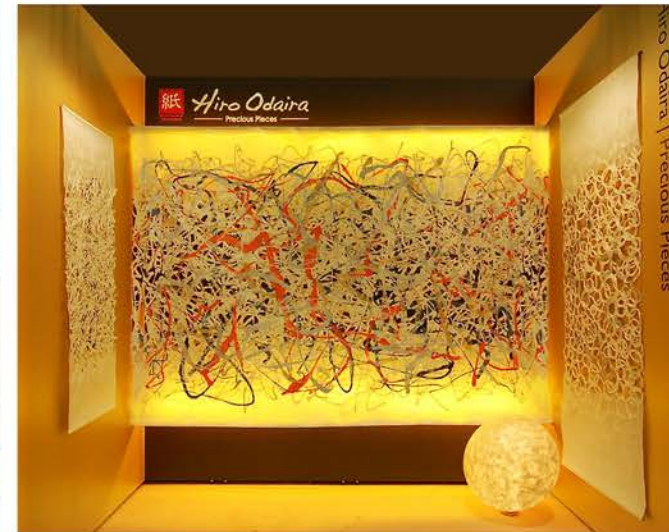
# Feature Wall

Art Washi for Interior Space





Mikimoto Jewelry, New York City



### Art Washi for Interior Space

*Our feature Washi is unique in that each individual parchment is handmade; therefore, no single sheet is exactly the same. Each sheet has the capability to vary in dimension, color, and design.*





DAIKANYAMA

*Unlike other Washi works, the featured wall parchments have the most versatility in terms of design. Each example is meant to showcase the boundless of Washi capabilities, whether the parchment is framed, hung, warped, draped, or left as it is, the parchment maintains its beauty.*









# Illuminated Wall

Washi with Lighting





## Washi with Lighting

*Washi parchment is coarse but not entirely transparent, even though a strong amount of light may diffuse through the material. The illuminated wall is special in that the LED lights used to illuminate the parchment may be placed in any direction or area around the parchment for added lighting effects. The light really infuses any space with warmth, and earthy tones, reminiscent of nature.*



*private residence, New York City*



*Nobu Miami, Florida*



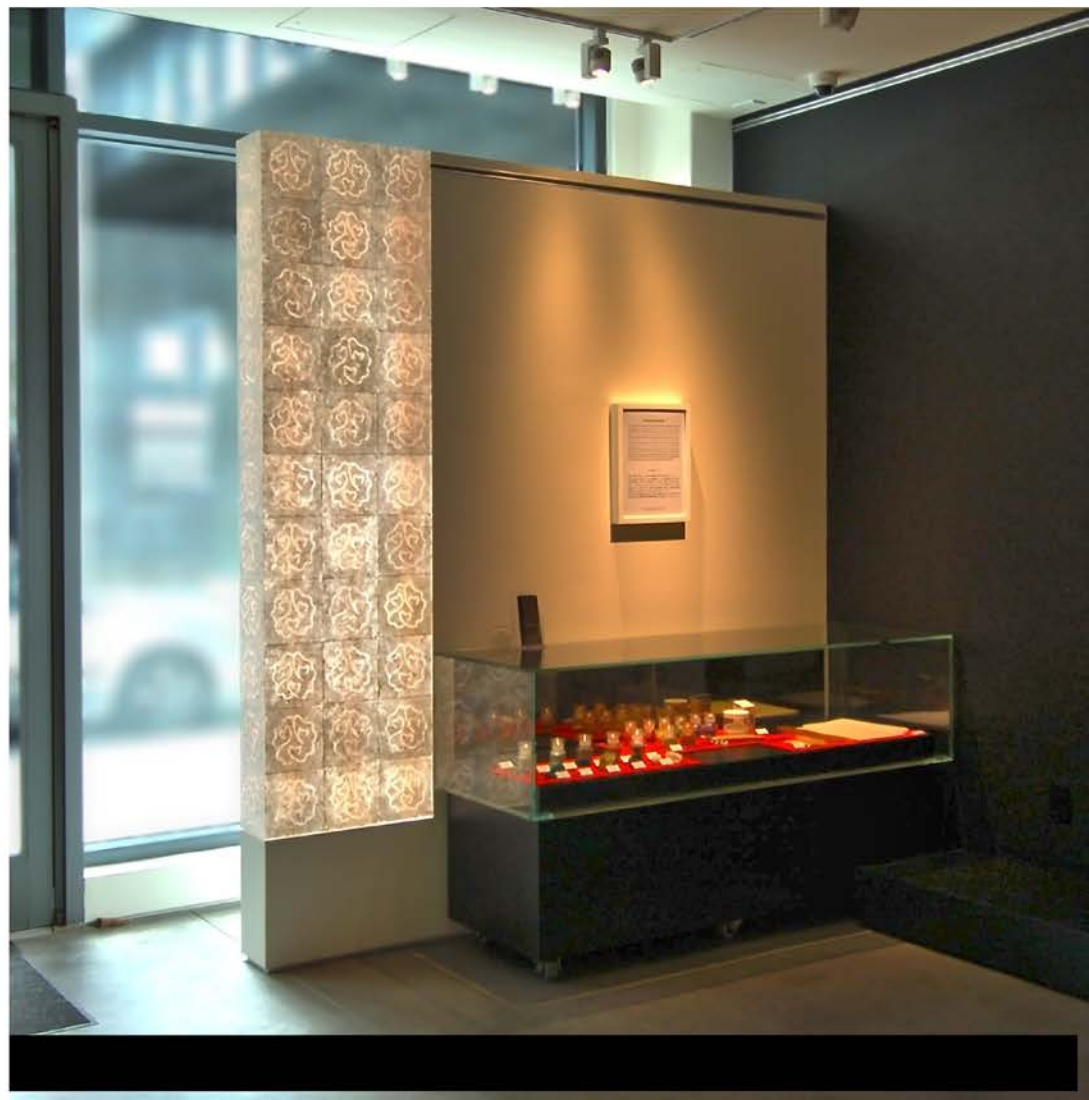
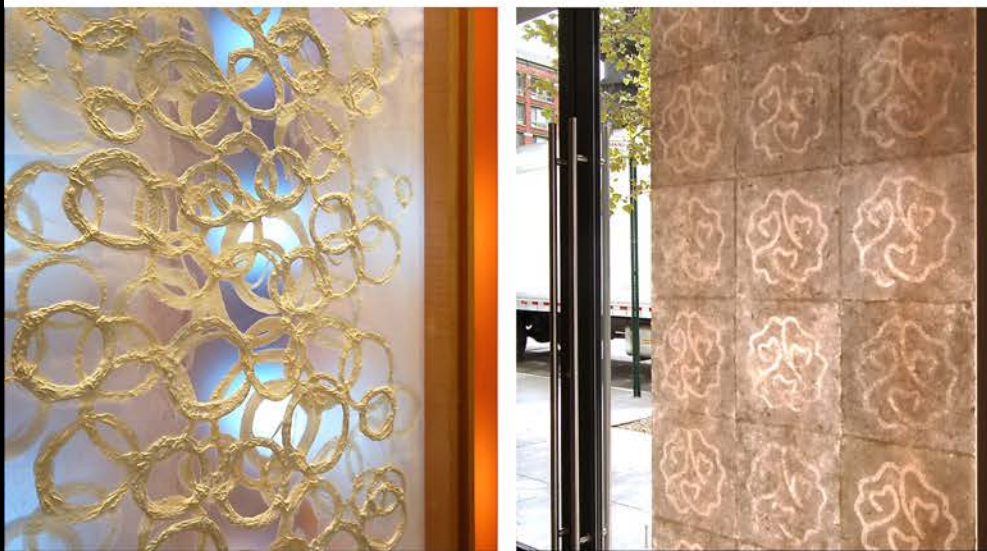


*Mt. Fuji Japanese Steakhouse, NY*





*Meditation Room, High Line, New York*



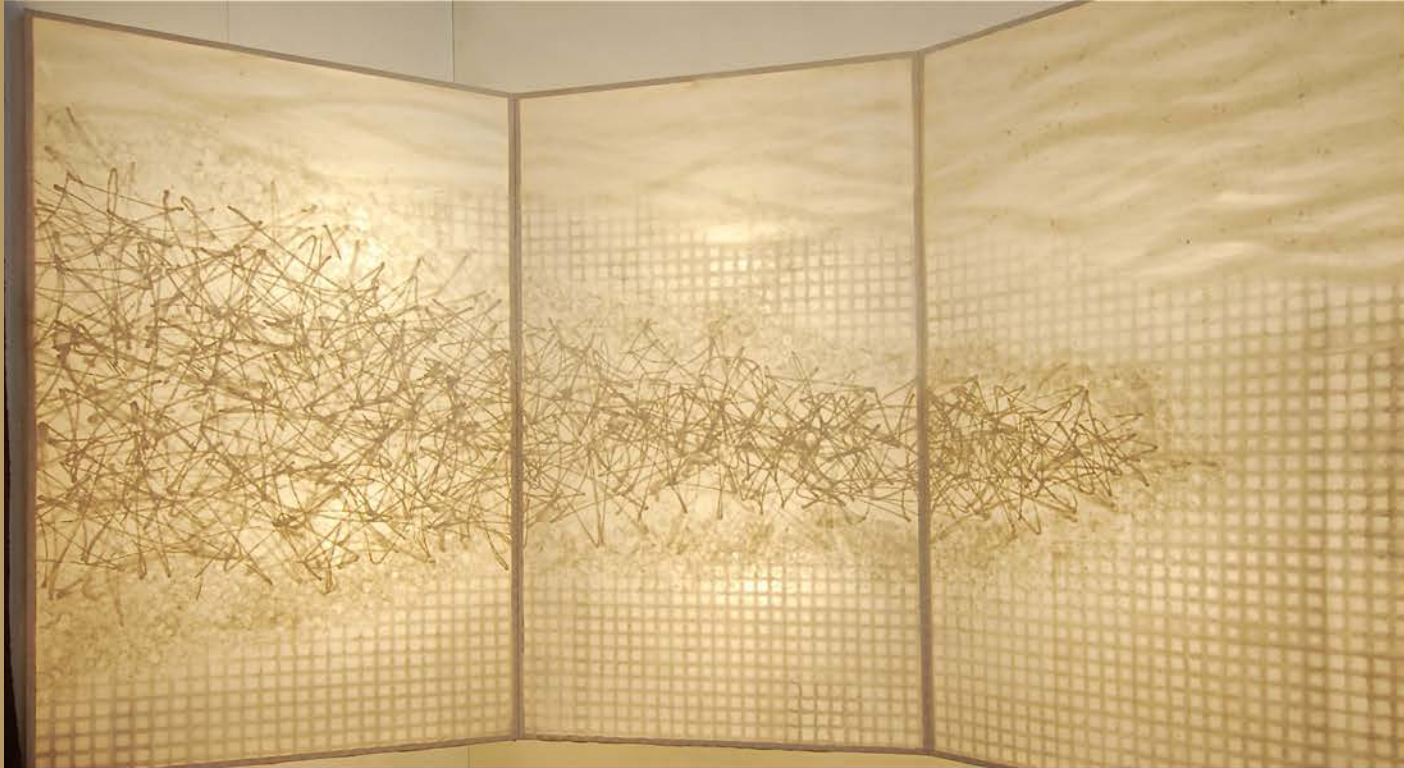




# Doors & Sliding Panels

Washi Laminated Glass Doors & Fusuma





*private residence, New York City*



*private residence, Westchester, NY*

## Doors & Sliding Panels

*Each door and sliding panel is known in Japan as Shoji screens. They come in various shapes and designs ranging from simple to intricate patterns, oftentimes depicting an image or story of nature. Because our screens allow for maximum privacy and openness, they are highly useful and incredibly beautiful decorations.*





# Room Dividers & Screens

Washi Room Partitions





*Saito's Japanese Steakhouse, Florida*

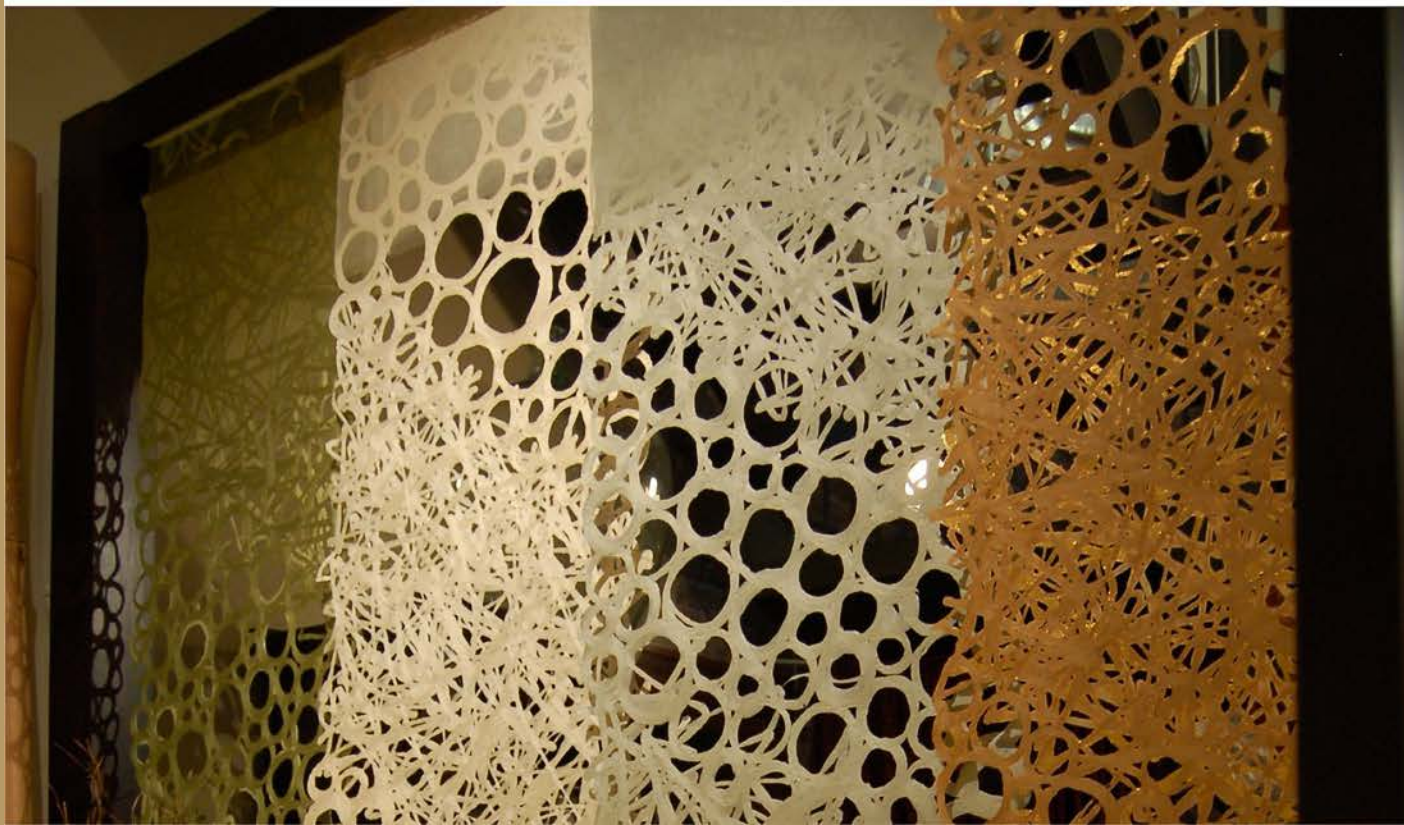


*Trump World Tower at UN Plaza, NYC*



### **Washi Room Partitions**

*The room dividers or screens require a number of techniques to assemble, and come in various sizes and forms. Their use however, can save space as well as introduce more color and texture to any interior or exterior space.*







# Lighting

Floor & Ceiling Lamp Shades





*Nobu Miami, Florida*



*Blue Ribbon Sushi, Las Vegas*

## Floor & Ceiling Lamp Shade

Our lighting shades come in the a variety of shapes and sizes. Some can even substitute as candle shades. Because of the translucency of Washi parchment, the light that diffuses through isn't harsh and often reflects the design patterns onto the furniture surfaces. The shades are also available in three dimensional volumes without any frames or added support.



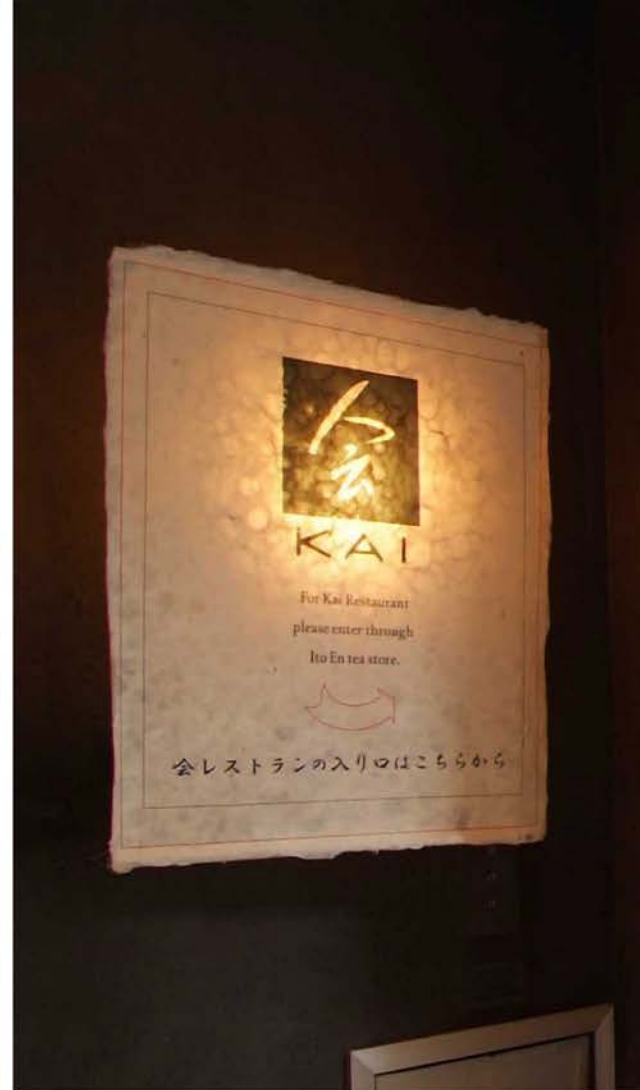


## Signage

Our signage units have the ability to be flat or three dimensional, illuminated or not, as well as other variations. It is a stylish way to showcase Washi while providing clear directions to whatever the sign says.



Kinokuniya Bookstore, New York City



Yale University Art Gallery, New Haven, CT





*Playa Vik Hotel, Uruguay*



## Wall Covering

*The wall coverings, unlike traditional wall paper, are much more durable and elegant in texture. They can also be lacquered for an added bonus of sustainability as it prevents weathering damage, mold build-up, and even water stains. Each covering may be designed in a variety of colors and design patterns.*





*Showroom, Union Square, New York City*



*Michener Art Museum, PA*



*Saito's Japanese Steakhouse, Florida*

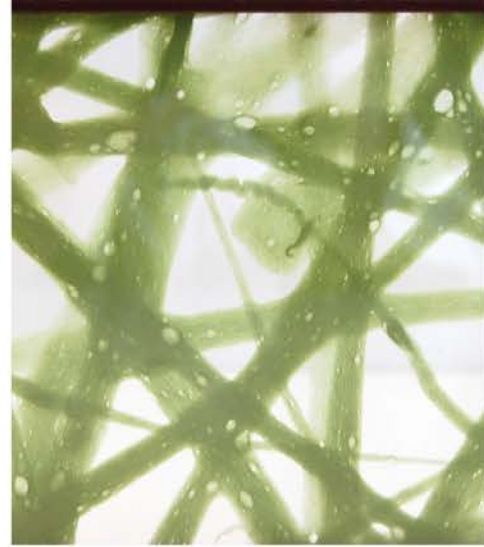
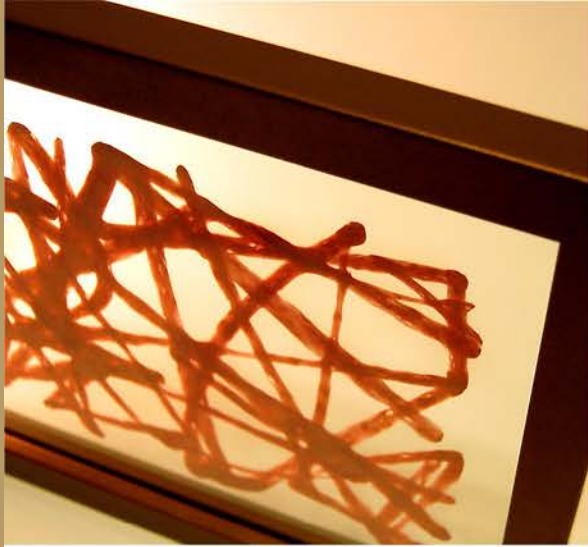
### **Window Treatment**

*Our window treatments mainly come as blinds or panels that shield from harmful UV rays. Some are adjustable, and can act similarly to our doors screens. An application of fire-retardant and water-resistant applicator is available with the Washi parchment for a more durable material.*



*Saito's Japanese Steakhouse, Florida*





## Products

*Our products aren't just simple stationary, and come in designs ranging from note cards to actual clothing made from Washi parchment. This section of our portfolio is an example of other uses Washi parchment has on a smaller scale.*





# The Artist



## Hiro Odaira

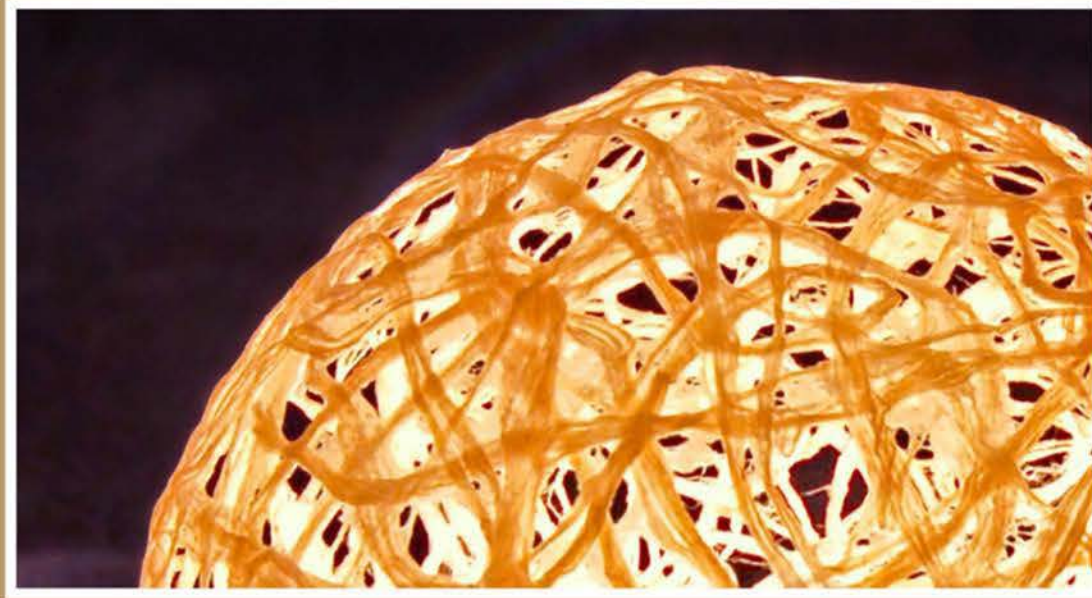
Hiro Odaira ([www.hiroodaira.com](http://www.hiroodaira.com)) the creator of Washi Art, which is made from a premium sustainable harvested plant fiber and presents an ethereal beauty to any setting for your featured walls, screens, doors, tables, amongst others. His work is entirely handcrafted based upon 500-year-old traditional techniques preferred by the Emperors of Japan. However, his traditional methods of applying Washi uses Washi as media. The approach of the artwork is extremely unique due to its flexibility and ability to work in concert with various types of surroundings and projects. Washi media encompasses the client's outlook and input of color schemes, dimensions, textures, patterns and any other specifications. The artwork is all-natural with no added acids or chemicals, and produces no emissions. The pigments consist of natural dyes, stone, and/or tannin juice, very occasionally metal powder is used.



Washi Informs Life Hiro Odaira All rights reserved

Copyright © 2013 Hiro Odaira. Book Design by Hisaaki Yamane, Published by Precious Pieces Gallery Inc. 5 Tudor City Pl. #102 NYC 11017 USA  
No part of this book may be used or reproduced in any manner without written permission except in the case of brief quotations embodied in critical articles or reviews, and within the terms of use as described. Printed in the United States of America





## Hiro Odaira/ Precious Pieces

[www.hiroodaira.com](http://www.hiroodaira.com)  
[www.precious-piece.com](http://www.precious-piece.com)  
[info@precious-piece.com](mailto:info@precious-piece.com)  
Phone: (212) 682-8505

Copyright © 2015 Hiro Odaira Washi Informs Life All rights reserved